



# Wayne Pipe & Supply, Inc

*Pump Division Serving Northeast Indiana & Northwest Ohio*

6040 Innovation Blvd. ♦ Fort Wayne, Indiana 46801

Telephone: (260) 423-9577 Fax: (260) 422-7794 1-800-552-3697

## Pumps

ARO  
Armstrong  
Bell & Gossett  
Brown & Sharpe  
Burks Pump  
Crane Pumps & Systems

Grundfos  
Gusher  
Hoffman Specialties  
Hydromatic  
Ingersoll-Rand  
Pacer  
Flint & Walling

Price  
Thrush  
Viking  
Weil  
Wright  
Zoeller

**Network access to most pump brands**

## Pumping Equipment Types

Centrifugal	Sanitary
Drum	Submersible
Chemical	Self Priming
Coolant	Sewage
Condensate	Slurry
Diaphragm	Steam
Magnetic Drive	Sump
Piston	Vacuum
Plunger	Vane
Regenerative Turbine	Vertical Turbine

## Repair and Service

All makes and types  
Pick up and delivery  
Complete shop facilities  
Factory trained technicians

## Mechanical Seals

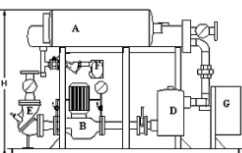
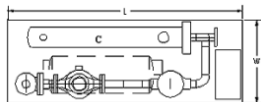
Fluidol Mechanical Seals

## After Market Pumps and Parts

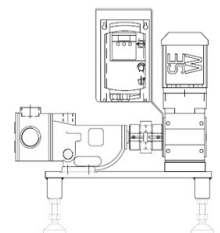
Durco  
Gorman Rupp

Goulds  
Ingersoll-Rand

Heat Exchangers



**Email: [pumpsales@waynepipe.com](mailto:pumpsales@waynepipe.com)**



Viking gear Pump layout



# Wayne Pipe & Supply, Inc

*Pump Division Serving Northeast Indiana & Northwest Ohio*

6040 Innovation Blvd. ♦ Fort Wayne, Indiana 46801

Telephone: (260) 423-9577

Fax: (260) 422-7794

1-800/552-3697

## Application Questions

1	Media (Water, oil, chemical, etc.): _____
2	Flow (GPM, GPH, etc.): _____
3	Operating Temperature (F, C): _____
4	Viscosity (SSU, cps, water-like, etc.): _____
5	Specific Gravity (Water =8.33 per gal.): _____
6	Percent of solids (If any): _____
7	Suction conditions: _____ a) Flooded (Feet of Head); or suction lift (Feet of Head): _____ b) Pipe size: _____
8	Discharge pressure (PSI, Ft. of Head): _____ a) Pipe size: _____
9	Duty ( 8 hrs per day, 5 days per week, continuous): _____
10	Drive: _____ a) Electric (Voltage / Phase / enclosure): _____ b) Air : _____ c) Hydraulic: _____
11	Model number of existing pump or replacement pump if known.

## Suggested accessories

1	Back-pressure relief valve
2	Check valve
3	Gauges

